

B-Te (Boron-Tellurium)

H. Okamoto

The B-Te phase diagram was unknown in [Massalski2].
Figure 1 shows the B-Te phase diagram constructed by
[2001Odi] based on thermal analysis data. The phase in
equilibrium with (Te) is unknown.

Reference

2001Odi: I.N. Odin, V.V. Grnibko, E.V. Safronov, and V.F. Kozlovskij, Study of Systems CdX-B₂X₃ (X = S, Se), CdTe-B-Te, *Zh. Neorg. Khim.*, 2001, **46**(7), p 1210-1214

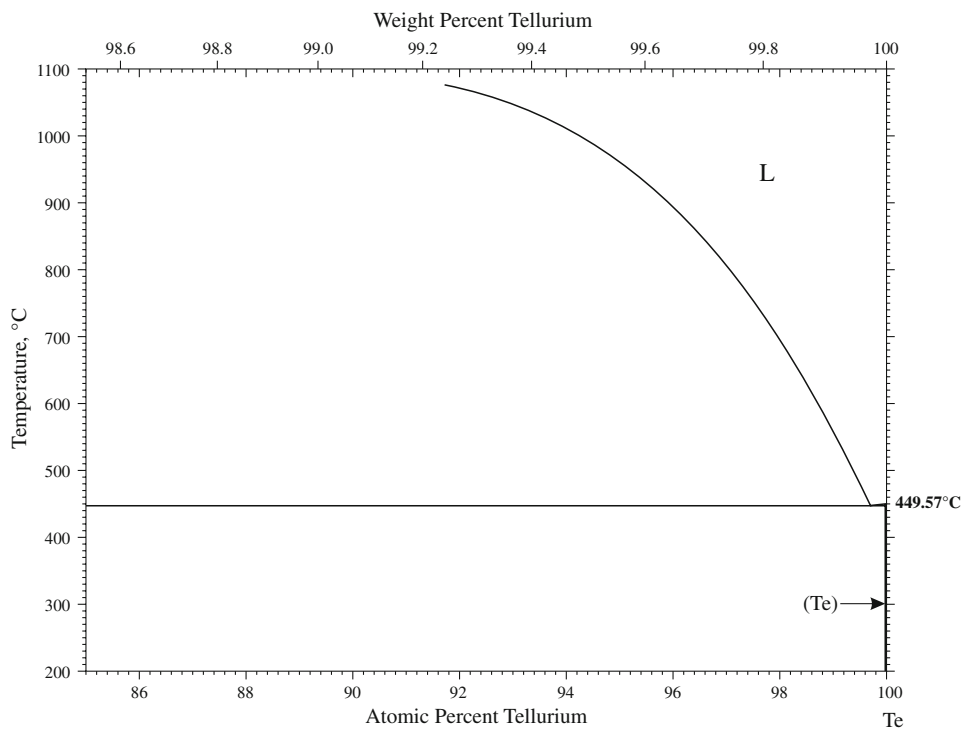


Fig. 1 B-Te phase diagram